

EXTERIOR

↑
TOP
WHEN
FOLDED

← FINAL FOLD

B B

C
C

C C

↑
FINAL FOLD

↑
TOP
WHEN
FOLDED

A A

A A



SMARTPRESS

TWIST

Folded Size: 6"W x 6"H | Flat Size: 12"W x 12"H

↑ TOP
WHEN FOLDED

B
B

↑
TOP WHEN
FOLDED

B
B

A A

A A

C C

C
C

FINAL FOLD
↓

↑
TOP
WHEN
FOLDED

BLEED: Your file needs to include a 0.125" bleed necessary for production. Bleed is printing that goes beyond the edge of the sheet after trimming. If a bleed is not included in document setup, there is a good chance there will be a gap between the edge of the printed area and the cut line. This happens because there is a tolerance when cutting the printed piece. For more information on the importance of bleed, visit our website: smartpress.com/support/printing-basics/bleed-borders.

CUT LINE (FINISHED SIZE): This is where your artwork will be trimmed.

SAFE MARGIN: Your file needs to include a 0.125" safe margin necessary for production. Safe margin is the area around the edge of the sheet. If the safe margin is not included in document setup, there is a chance that the art close to the edge will get cut off, due to machine shift during cutting. This happens because there is a tolerance when cutting the printed piece. For more information on Cutting Tolerance, visit our website: smartpress.com/support/printing-basics/cutting-tolerance-for-print.

FOLDS: The orange lines indicate where the folds will be. Follow the folds in alphabetical order (e.g., A|A is the first fold, B|B is the second fold, etc).

VISIBLE WHEN FOLDED: The light pink shapes show which panels/areas are visible when folded.

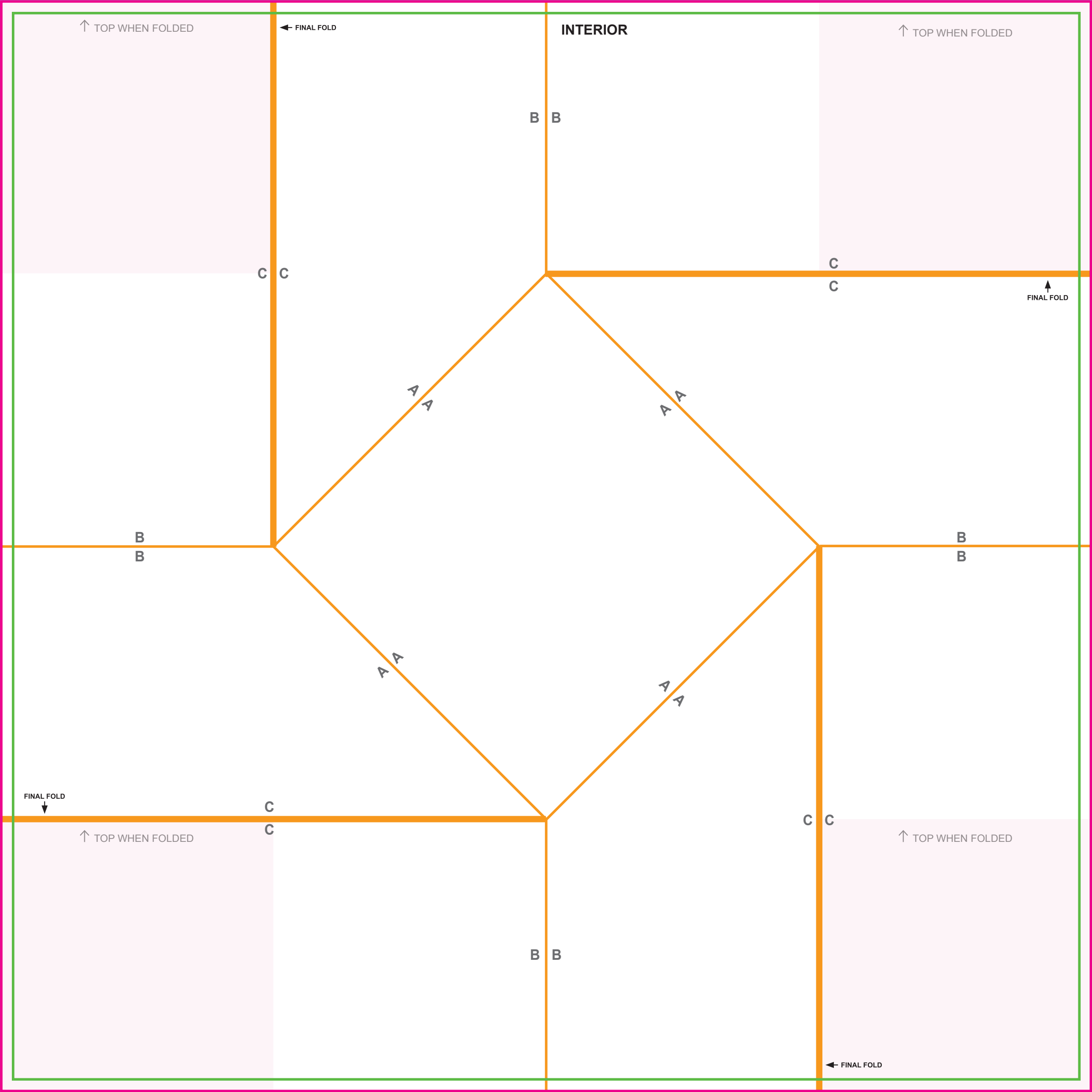
B B

FOLD BY

foldfactory.com

FF015

← FINAL FOLD



↑ TOP WHEN FOLDED

← FINAL FOLD

INTERIOR

↑ TOP WHEN FOLDED

B B

C C

C C

↑ FINAL FOLD

A A

A A

A A

A A

B B

B B

A A

A A

A A

A A

FINAL FOLD



C C

↑ TOP WHEN FOLDED

C C

↑ TOP WHEN FOLDED

B B

← FINAL FOLD