

EXTERIOR

D  
D

FINAL FOLD



# STAR FOLDED CROSS

*Folded Size: 7.0"W x 4.5"H | Flat Size: 14.25"W x 11.4"H*

B B

COVER

C C

**BLEED:** Your file needs to include a 0.125" bleed necessary for production. Bleed is printing that goes beyond the edge of the sheet after trimming. If a bleed is not included in document setup, there is a good chance there will be a gap between the edge of the printed area and the cut line. This happens because there is a tolerance when cutting the printed piece. For more information on the importance of bleed, visit our website: [support.smartpress.com/print-file-preparation/bleeds-borders](https://support.smartpress.com/print-file-preparation/bleeds-borders)

**CUT LINE (FINISHED SIZE):** This is where your artwork will be trimmed.

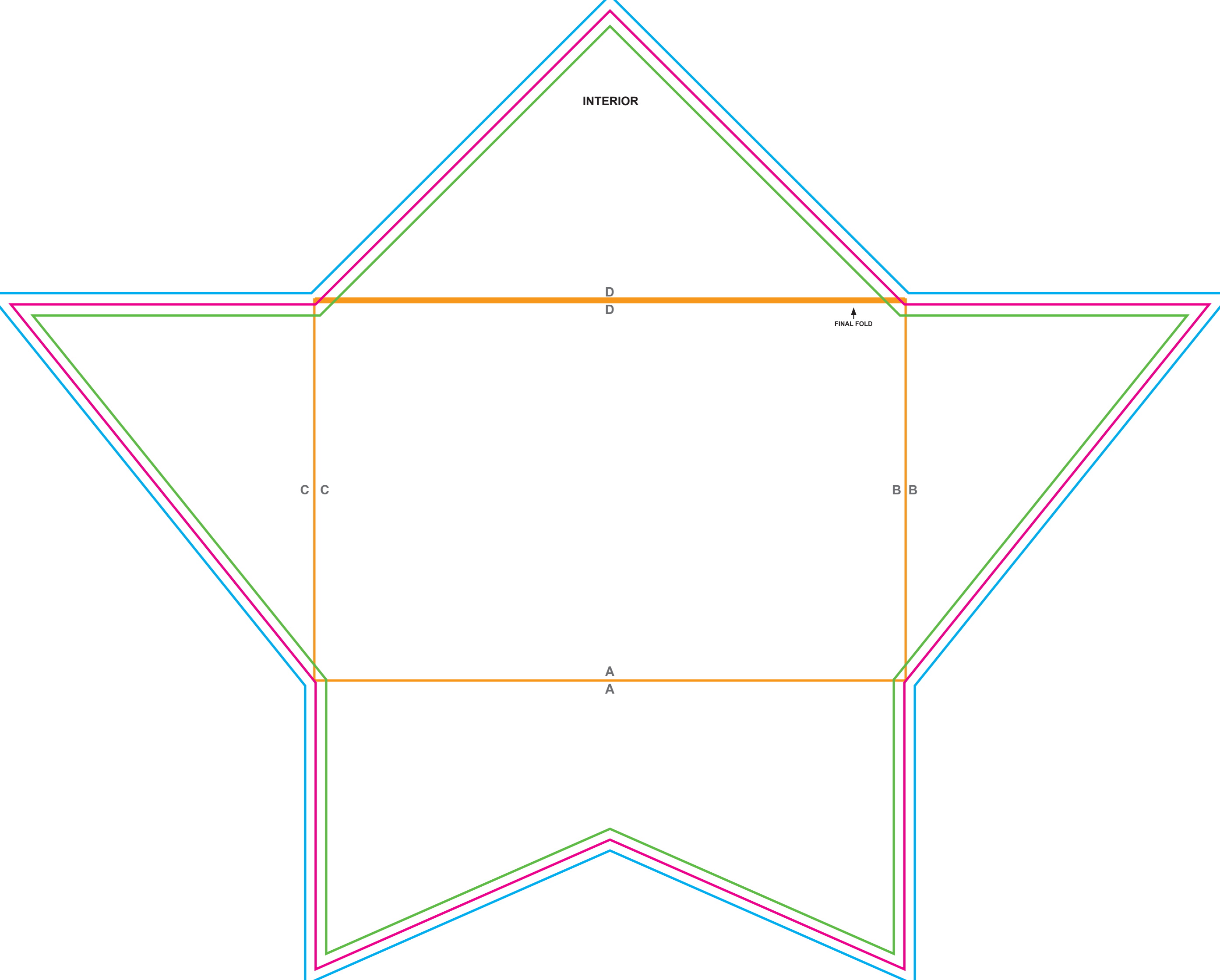
**SAFE MARGIN:** Your file needs to include a 0.125" safe margin necessary for production. Safe margin is the area around the edge of the sheet. If the safe margin is not included in document setup, there is a chance that the art close to the edge will get cut off, due to machine shift during cutting. This happens because there is a tolerance when cutting the printed piece. For more information on Cutting Tolerance, visit our website: [support.smartpress.com/print-file-preparation/cutting-tolerance](https://support.smartpress.com/print-file-preparation/cutting-tolerance)

**FOLDS:** The orange lines indicate where the folds will be. Follow the folds in alphabetical order (e.g., A|A is the first fold, B|B is the second fold, etc).

A  
A

FOLD BY

foldfactory.com



INTERIOR

D  
D

FINAL FOLD

C C

B B

A  
A