



SMARTPRESS

# SINGLE POCKET FOLDER

*Finished Size: 9"W x 12"H with a single 4" inside right pocket*

COVER

**BLEED:** Your file needs to include a 0.125" bleed necessary for production. Bleed is printing that goes beyond the edge of the sheet after trimming. If a bleed is not included in document setup, there is a good chance there will be a gap between the edge of the printed area and the cut line. This happens because there is a tolerance when cutting the printed piece. For more information on the importance of bleed, visit our website: [smartpress.com/support/printing-basics/bleeds-borders](https://smartpress.com/support/printing-basics/bleeds-borders).

**CUT LINE (FINISHED SIZE):** This is where your artwork will be trimmed.

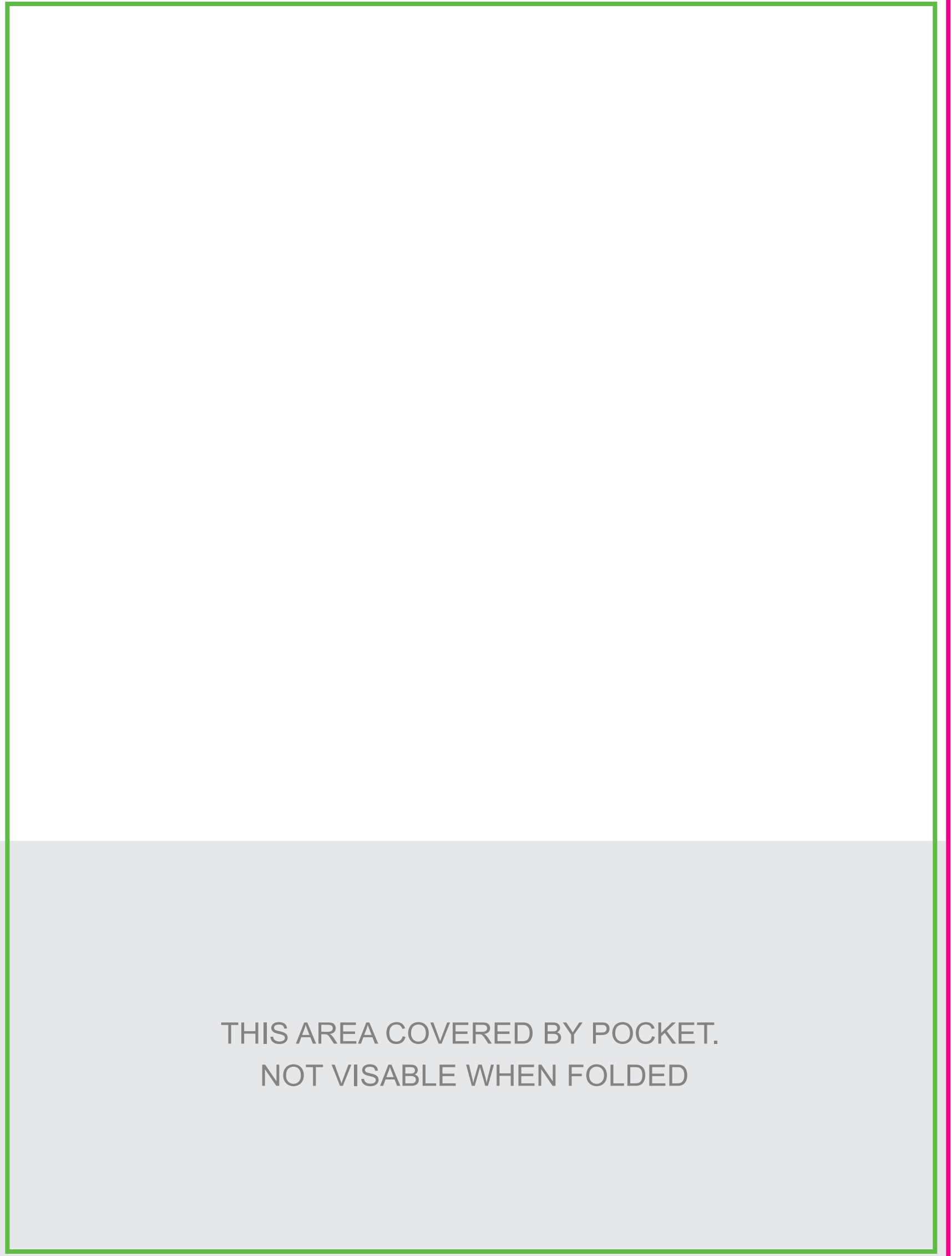
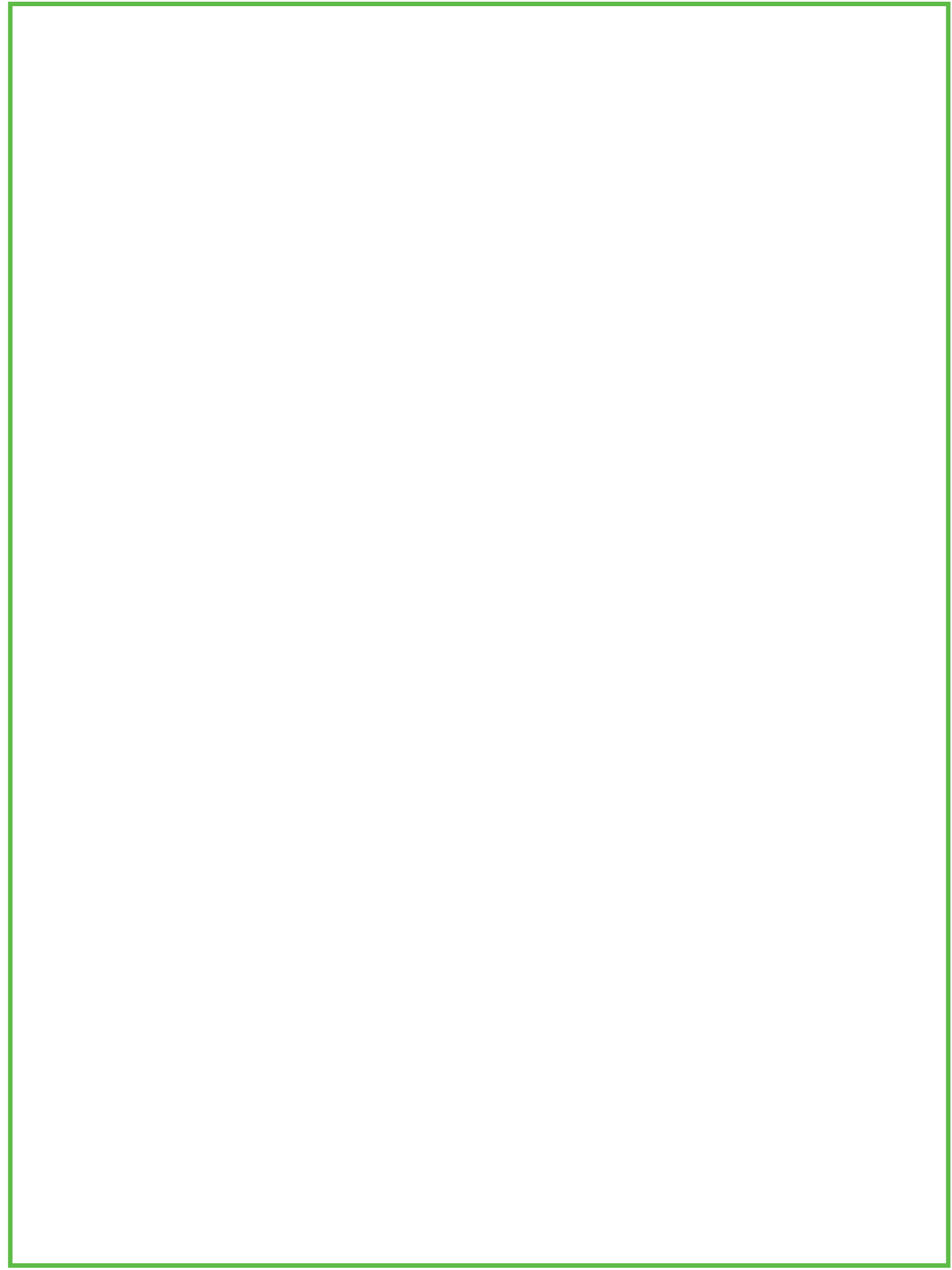
**SAFE MARGIN:** Your file needs to include a 0.5" safe margin at the top and a 0.125" safe margin on the bottom and sides necessary for production. Safe margin is the area around the edge of the sheet. If the safe margin is not included in document setup, there is a chance that the art close to the edge will get cut off, due to machine shift during cutting. This happens because there is a tolerance when cutting the printed piece. For more information on Cutting Tolerance, visit our website: [smartpress.com/support/printing-basics/cutting-tolerance](https://smartpress.com/support/printing-basics/cutting-tolerance).

**FOLDS:** The orange lines indicate where the folds will be.

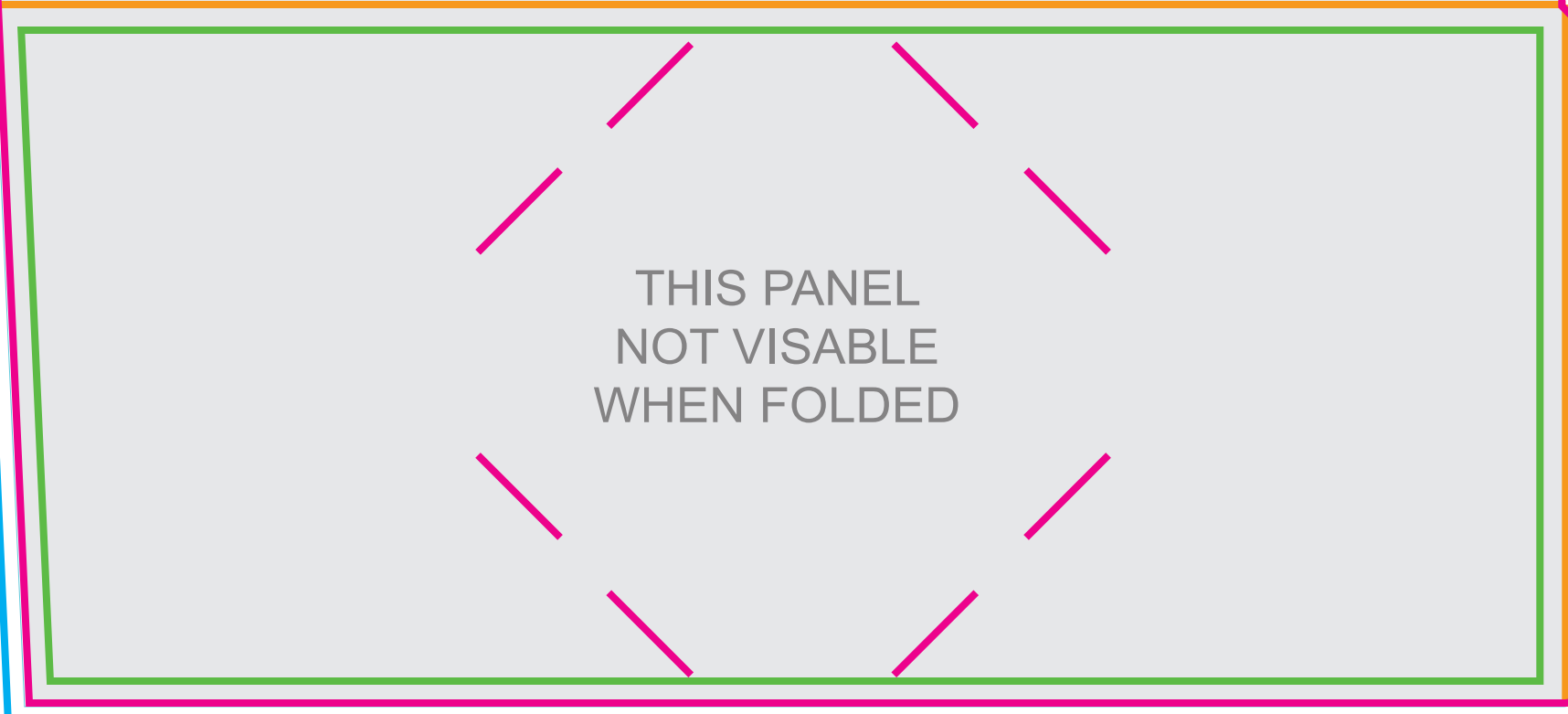
BACK COVER

THIS PANEL  
UPSIDE DOWN

GLUE TAB  
NO INK IN THIS AREA



THIS AREA COVERED BY POCKET.  
NOT VISABLE WHEN FOLDED



THIS PANEL  
NOT VISABLE  
WHEN FOLDED



GLUE TAB  
NO INK IN THIS AREA