

HOW TO SET UP

Foil on Your Product

INDEX

PAGE 1 // SET UP THE FILE

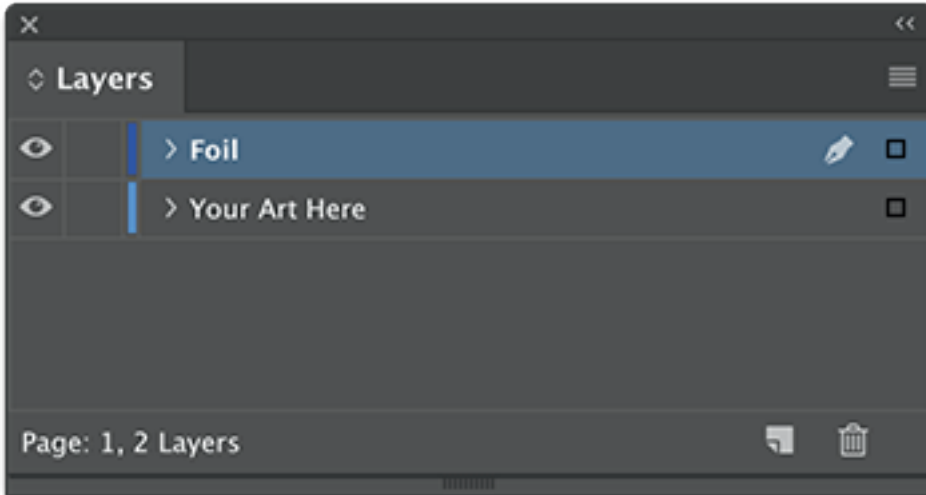
PAGE 2 // DESIGN THE FILE

PAGE 3 // EXPORT THE FILE

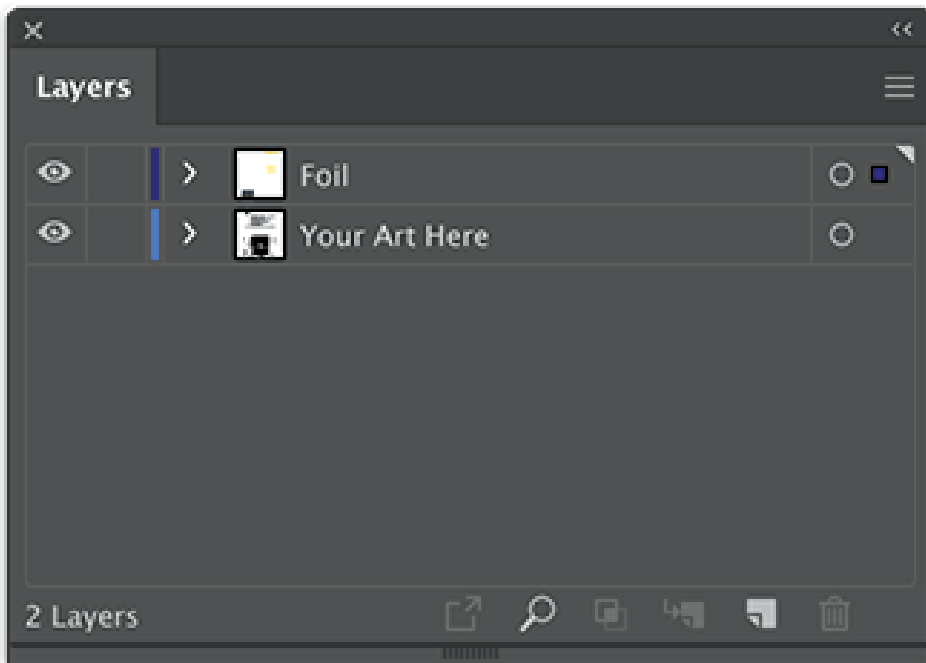
PAGE 4 // CHECK THE PDF FILE

Set Up the File

Select the PDF, IDML or EPS template. Add each foil element to the Foil layer. For custom sizes, set up the document to the finished size (including bleed) and add a new layer named "Foil".



InDesign Layers Panel



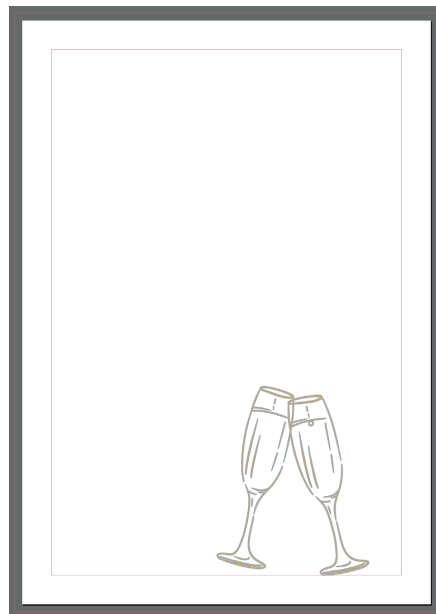
Illustrator Layers Panel

Design the File

All foil elements on the Foil layers should be in the vector format with the Foil spot color to ensure a smooth finish. Example is a 7" x 10" Foil Greeting Card with holographic foil and a fold, created in InDesign.



Both Art and Foil Layer visible



Art Layer visible

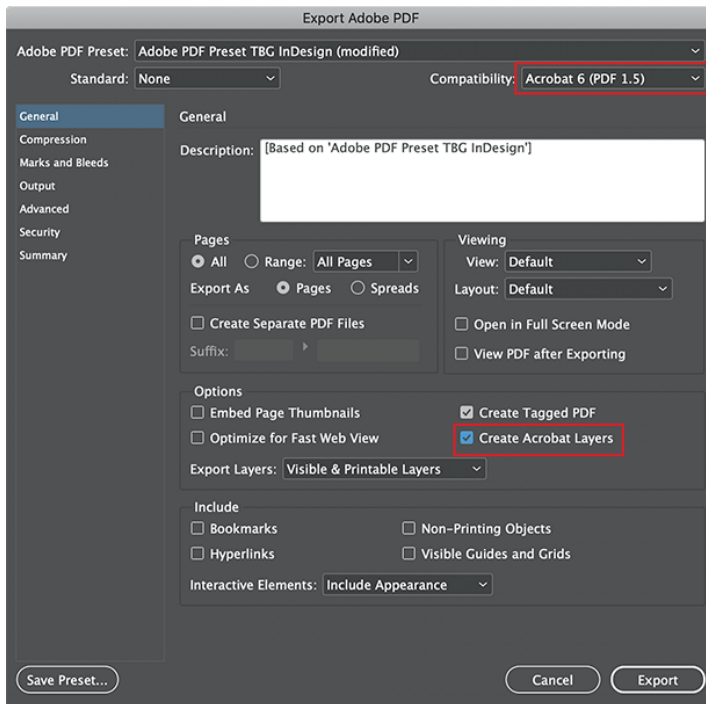


Foil Layer visible

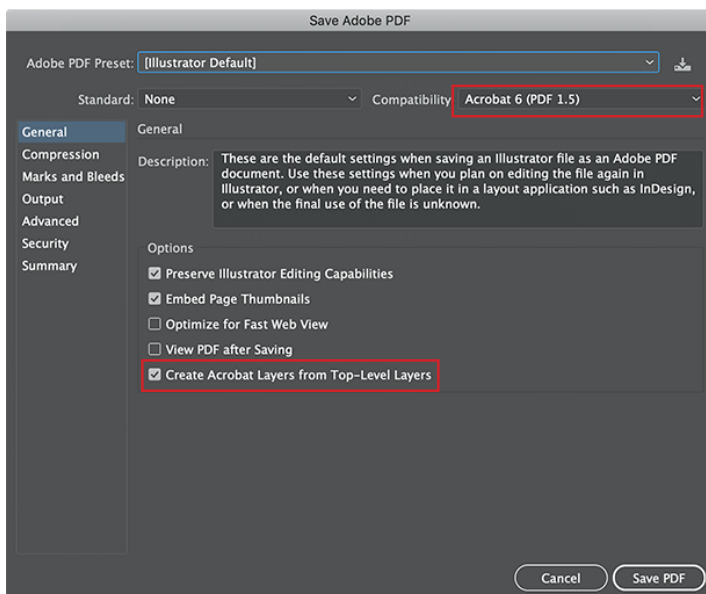
Export the File

Export the file as a layered PDF (see images below).

For InDesign, select Export As PDF. For Illustrator, select Save As PDF.



InDesign "Export As PDF" settings



Illustrator "Save As PDF" settings

Check the PDF File

Open the PDF in Acrobat to check for layers. In Acrobat, expand the Layers icon on the left and find two layers called Your Art Here and Foil.

