

HOW TO SET UP

---

# Foil Business Card

INDEX

PAGE 1 // SET UP THE FILE

PAGE 2 // DESIGN THE FILE

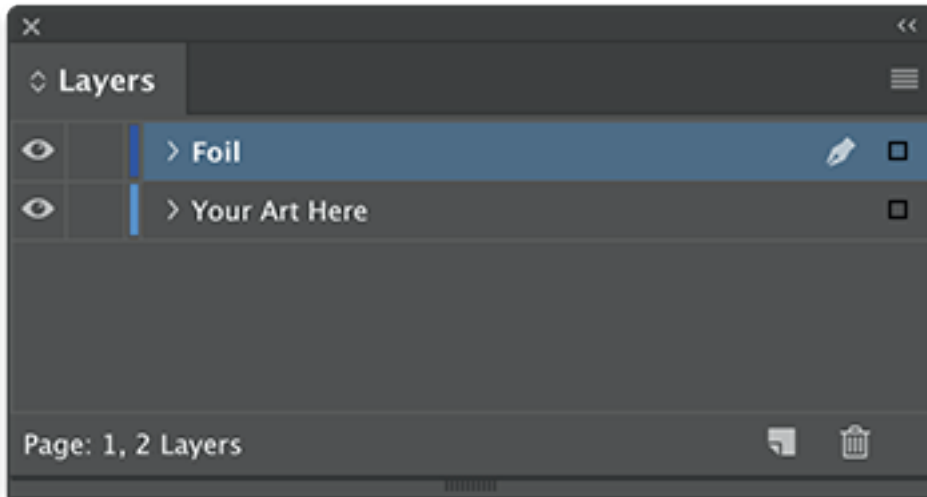
PAGE 3 // EXPORT THE FILE

PAGE 4 // CHECK THE PDF FILE

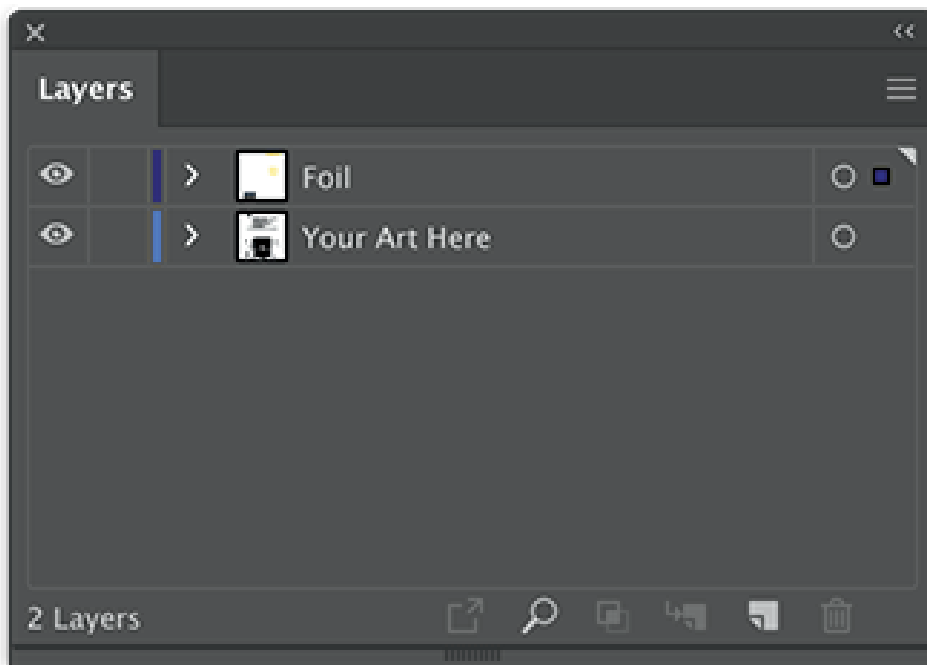
PAGE 5 // FINAL FOIL BUSINESS CARD

# Set Up the File

Select the PDF, IDML or EPS template. Add each foil element to the Foil layer. For custom sizes, set up the document to the finished size (including bleed) and add a new layer named "Foil".



InDesign Layers Panel



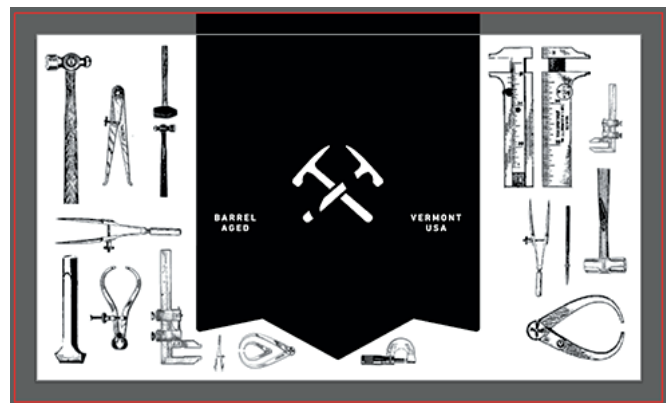
Illustrator Layers Panel

# Design the File

All foil elements on the Foil layers should be in the vector format with the Foil spot color to ensure a smooth finish. Example is a 3.5" x 2" Gold Foil Business Card, created in Illustrator.



Both Art and Foil Layer visible



Art Layer visible

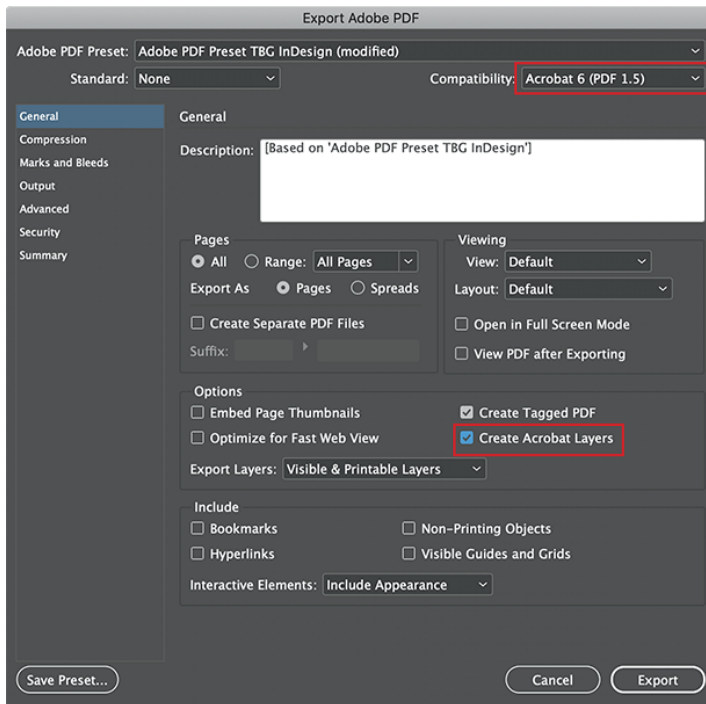


Foil Layer visible

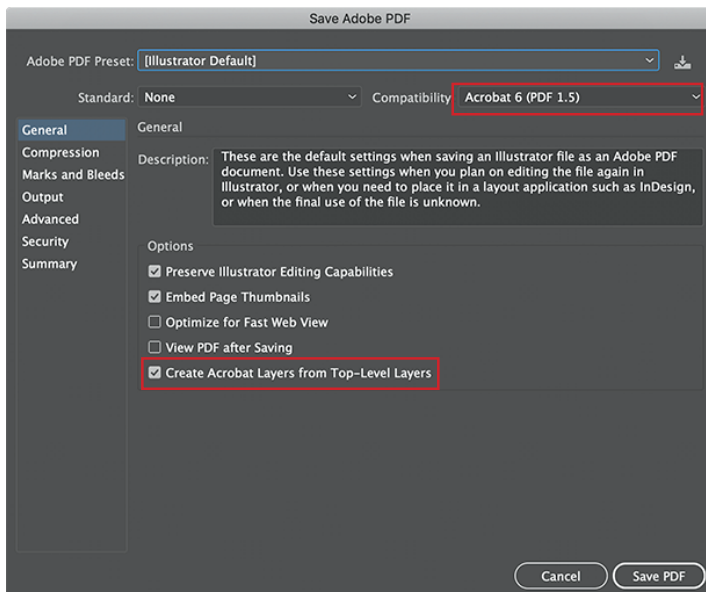
# Export the File

Export the file as a layered PDF (see images below).

For InDesign, select Export As PDF. For Illustrator, select Save As PDF.



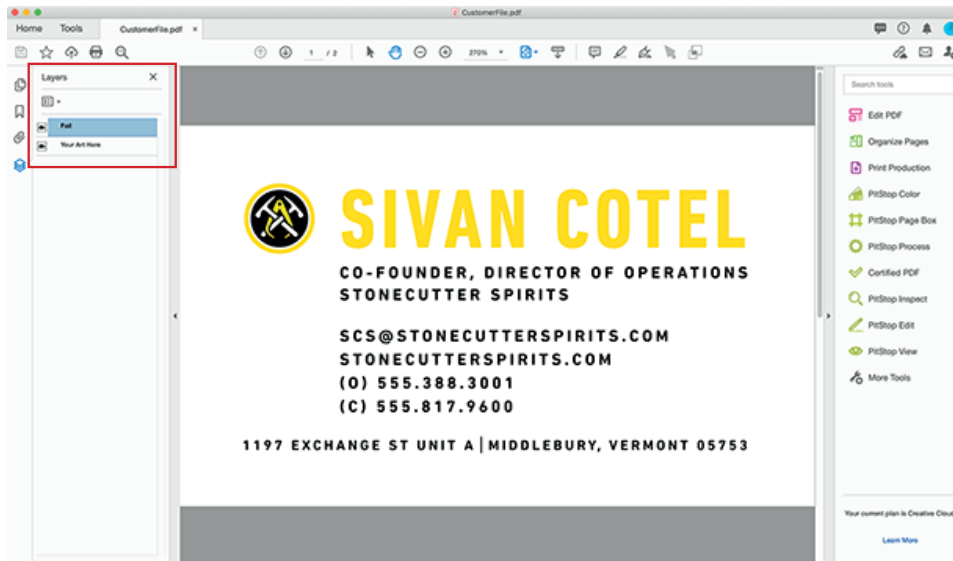
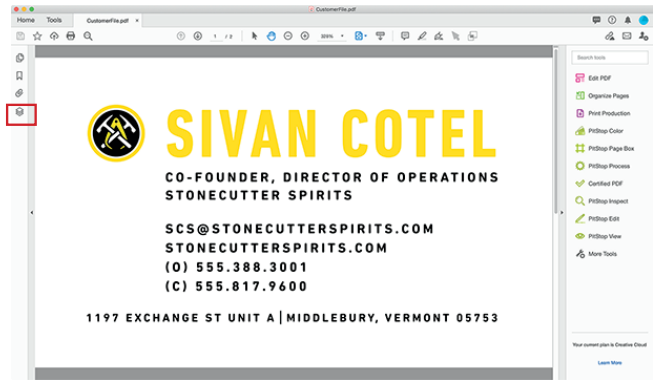
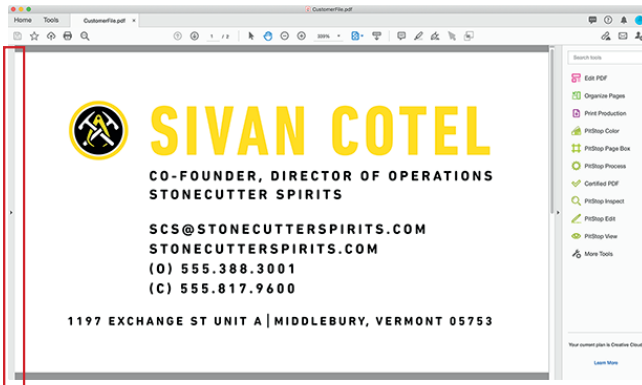
InDesign "Export As PDF" settings



Illustrator "Save As PDF" settings

# Check the PDF File

Open the PDF in Acrobat to check for layers. In Acrobat, expand the Layers icon on the left and find two layers called Your Art Here and Foil.



# Final Foil Business Card



Holographic Foil Business Card



Silver Foil Business Card